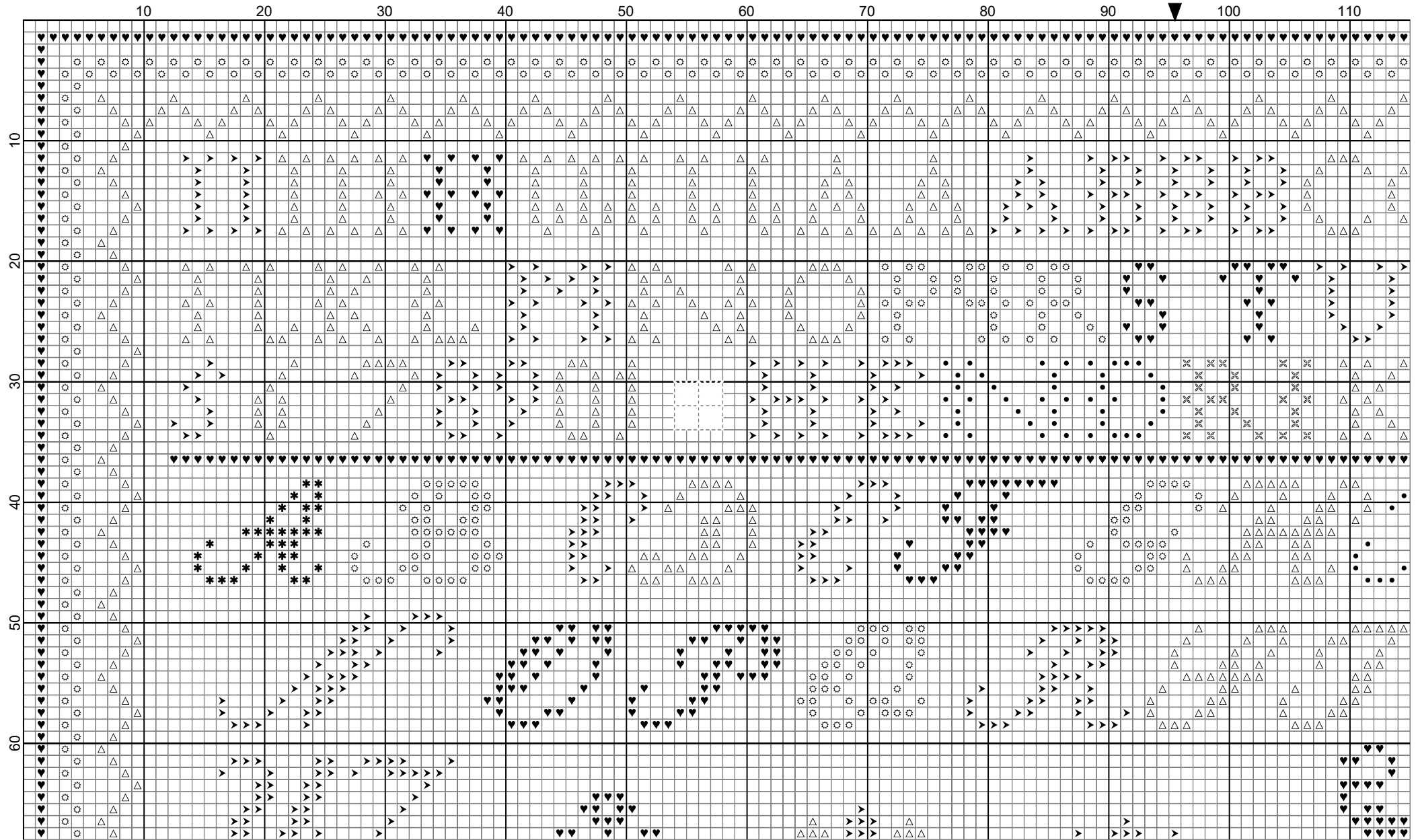
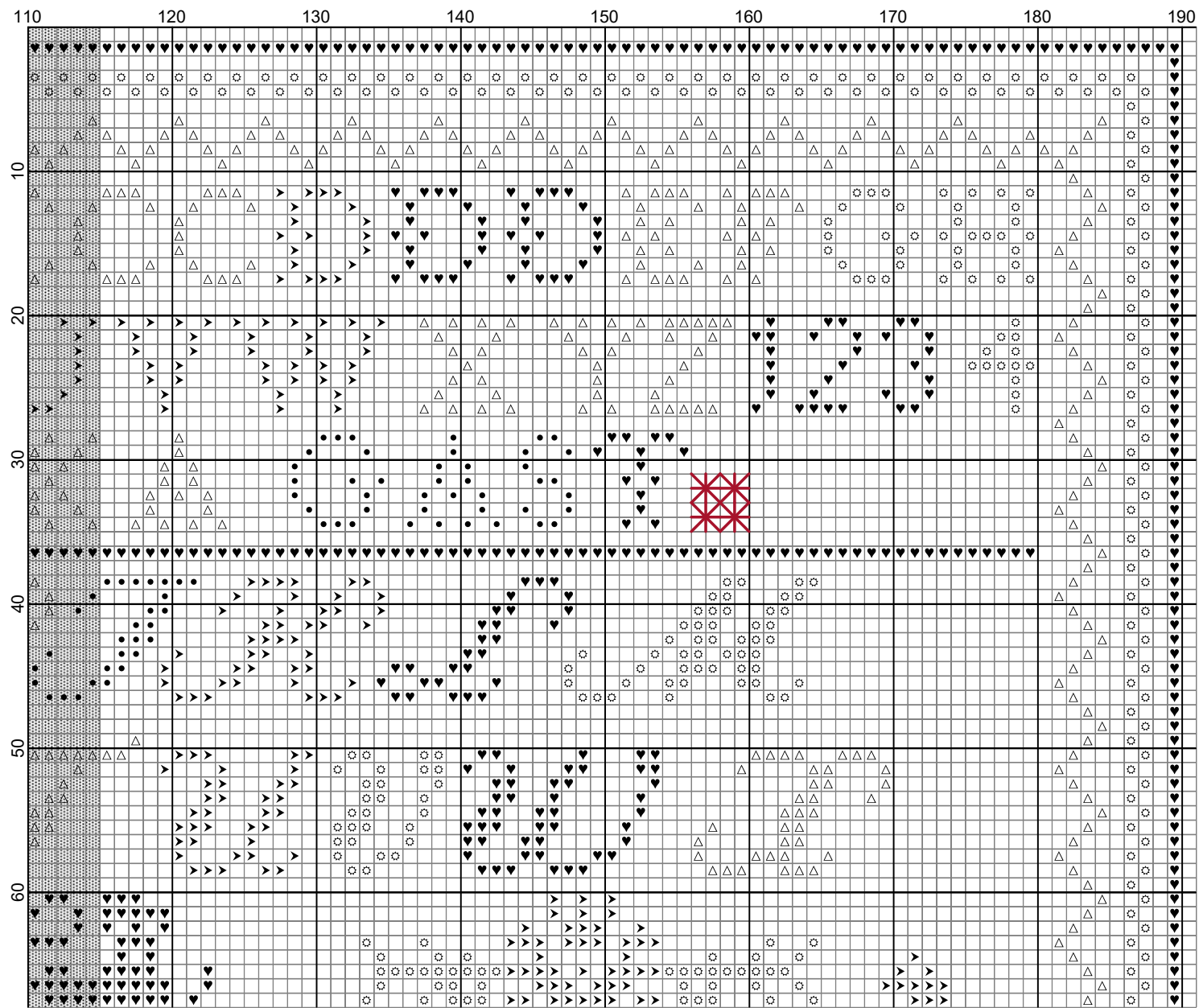


# Hendrika Gast 1863 deel 1-8










Atelier Soed idee©






# Hendrika Gast 1863 deel 1-8



## Legend:

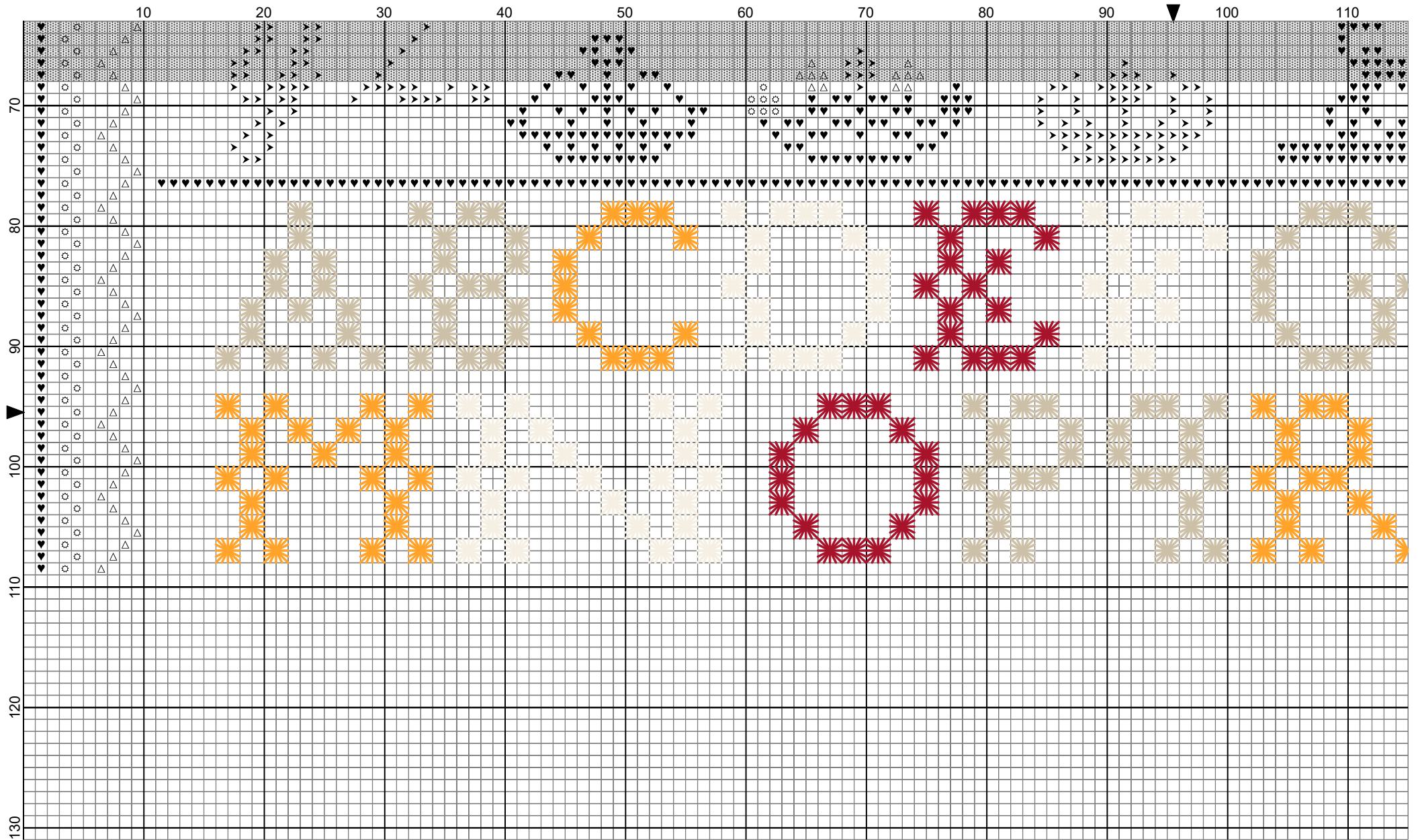
-  DMC-209
-  DMC-498
-  DMC-741
-  DMC-822
-  DMC-930
-  DMC-3782
-  DMC-5200

## Backstitches:

-  DMC-498
-  DMC-741
-  DMC-822
-  DMC-3782
-  DMC-5200

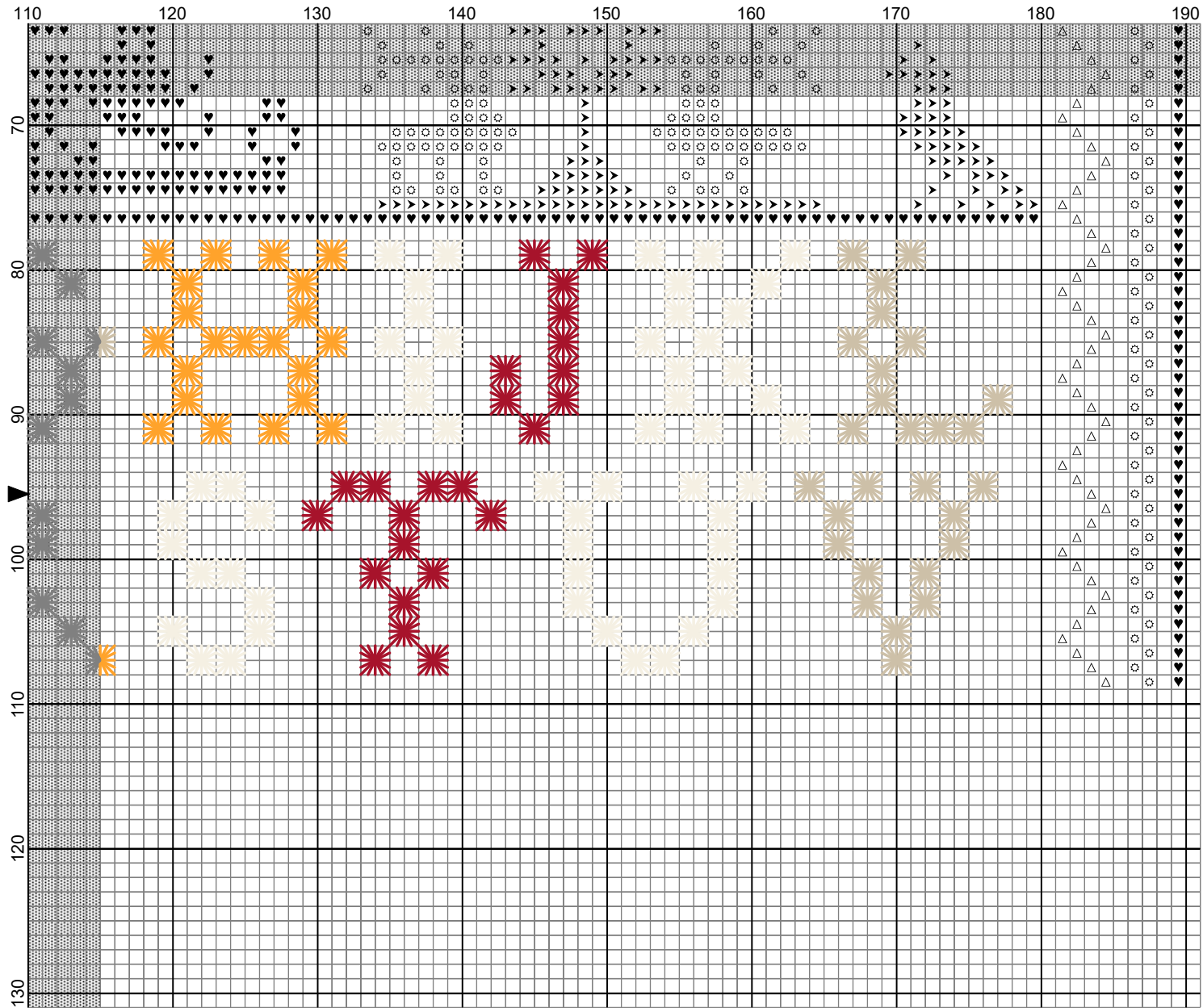
Atelier Soed idee©

# Hendrika Gast 1863 deel 1-8



Atelier Soed idee©

# Hendrika Gast 1863 deel 1-8



Atelier Soed idee©